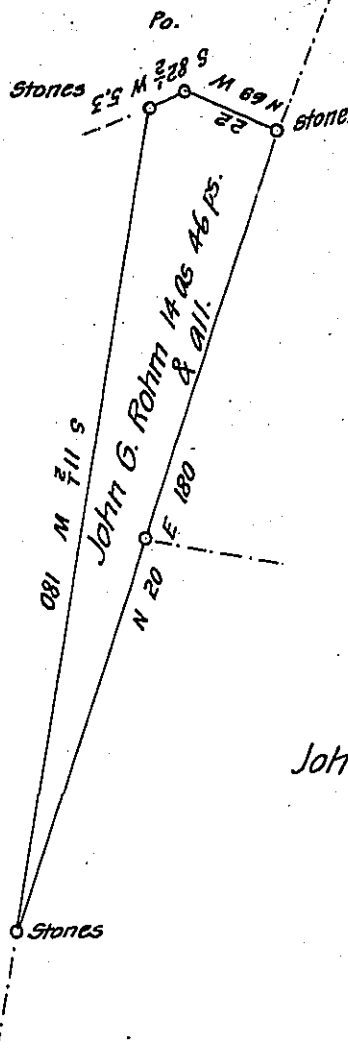


John G. Rohm
In Right of
Harrison Barton



L.A. Carpenter

John Karns

Situate on the West side of Rays hill in East Providence Township
 Bedford County Containing 14 Acres 46 perches and the usual allowance of
 Six per Cent for Roads &c. Surveyed 10th day of Dec. 1868. In pursuance of
 a Warrant granted to John G. Rohm dated 6th Dec. 1866 for 15^{as}

Sam^l Ketterman C.S.

To J. M. Campbell Esqr

S. G.

IN TESTIMONY that the above is a copy of the original remaining on file in
 the Department of Internal Affairs of Pennsylvania, made
 conformably to an Act of Assembly approved the 16th day of
 February, 1833, I have hereunto set my Hand and caused
 the Seal of said Department to be affixed at Harrisburg,
 this second day of November 1906

Loac R. Brown
 Secretary of Internal Affairs.